



Contents

2

Page	Description
3	Herbie Clip on MG Rover 25/45 Series
4	Herbie Clip on MG Rover 75 Series
5	Herbie Clip on Rover 800 Series KV6 Engine.
6	Herbie Clip on Nissan Micra/March.
7	Herbie Clip on Nissan USA
8	Herbie Clip on Nissan Primera
9	Herbie Clip on Ford Focus RS
10	Herbie Clip on General Motors USA
11	Herbie Clip on General Motors Chevy Impala.
12	Herbie Clip on Landrover Defender tdi.
13	Herbie Clip on Landrover Discovery.
14	Herbie Clip on Mantec Snorkel.
15	Herbie Clip on Massey Ferguson .

MG Rover 25/45 Series

3

Size Used

- 75

MAHLE



75 Clip fitted
to Air
Induction
Hose



MG Rover 75 Series

4

Size Used

- 70



70 Clip fitted to Blow
Moulded Air Induction Hose

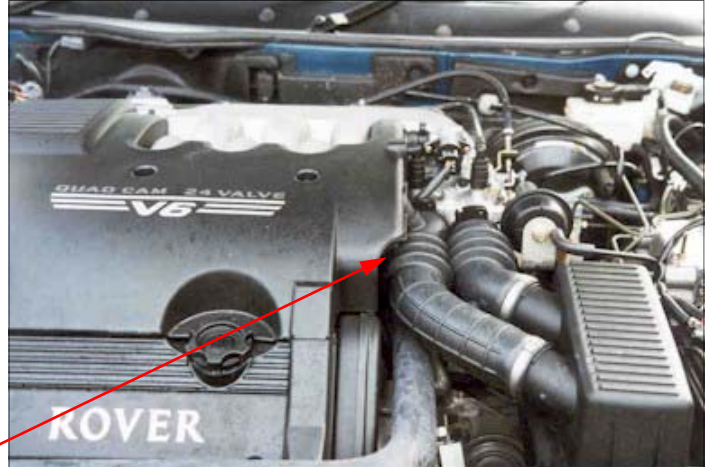


Rover 800 Series KV6 Engine

5

Sizes Used

- K
- P
- W



W Clip
fitted to Air
Induction
Hose



P Clip fitted
to Cooling
System



Nissan Micra/March

6

Size Used

- C WHITE



White C Clip
fitted to
Washer
Reservoir

Nissan (USA)

7

Size Used

- 66 GREY



Grey 66 Clip
fitted to rubber
seal for steering
column

Nissan Primera

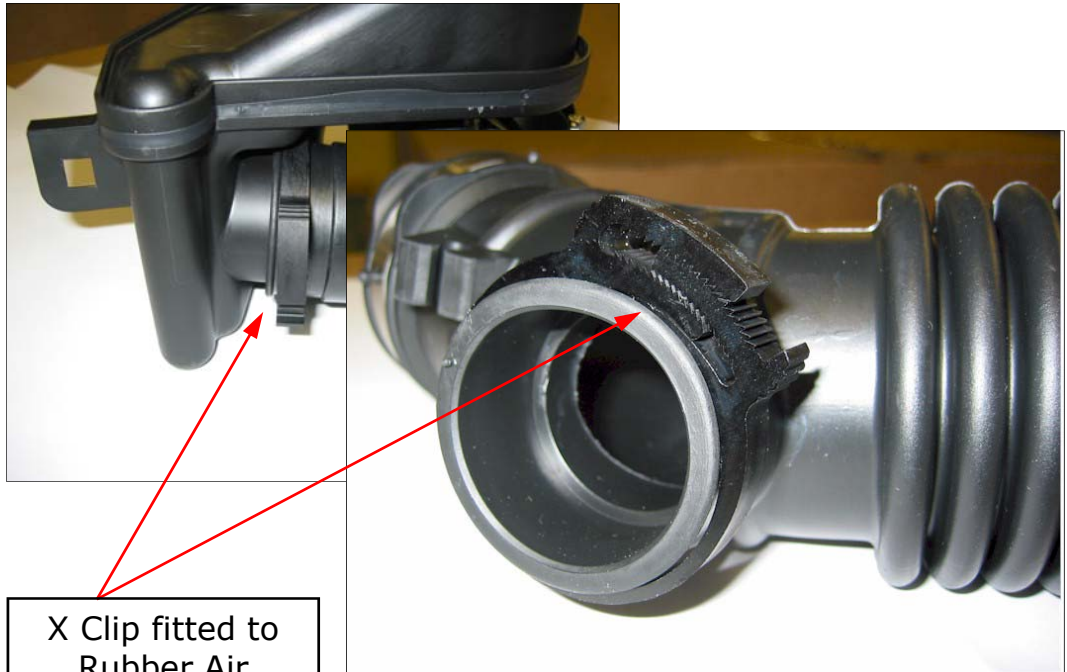
8

Size Used

- X



MAHLE



X Clip fitted to
Rubber Air
Induction Hose



Ford Focus RS

9

MAHLE



Size Used

- 80
- 65



80 + 65 Clips fitted to the Air Induction Hose

General Motors (USA)

10

Sizes Used

- E
- D
- G
- 66
- 75



Clips fitted to Fuel
Pump/Sender Unit

**General Motors Chevy Impala
(USA)**

11

Sizes Used

- E



E Clip fitted to
Overflow Reservoir



Landrover Defender tdi

12

Sizes Used

- K
- 85



85 & K Clip on
Defender tdi fitted
to Air Induction
System



Landrover Discovery

13

Sizes Used

- K
- 75



75 & K Clip on
Discovery fitted to
Air Induction
System



Mantec Snorkel

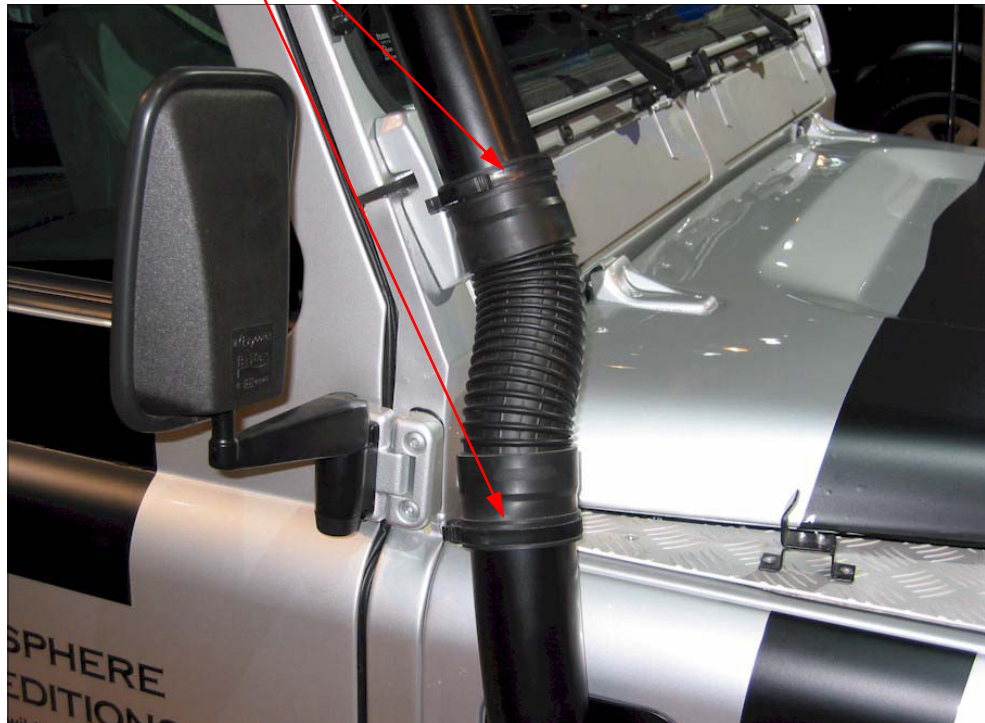
14

Sizes Used

- 66
- 70



66 + 70 Clip fitted to
External Air Induction Hose



Massey Ferguson

15

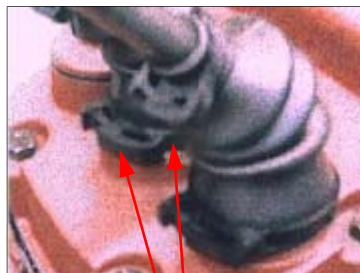
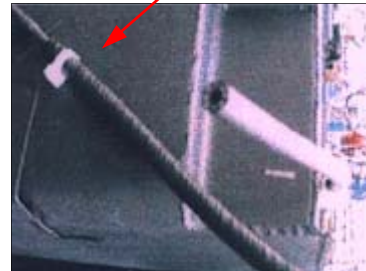
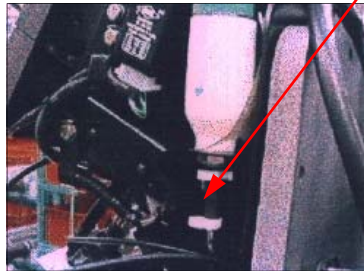
Sizes Used

- C WHITE
- G
- V
- X

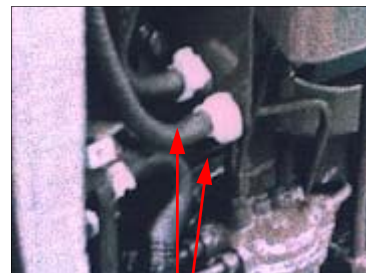


White C Clip
fitted to brake
fluid reservoir

White C Clip
fitted to fuel tank
connection



X V & G Clips
fitted to gear lever
gaiter



White C Clip fitted
to fuel filter